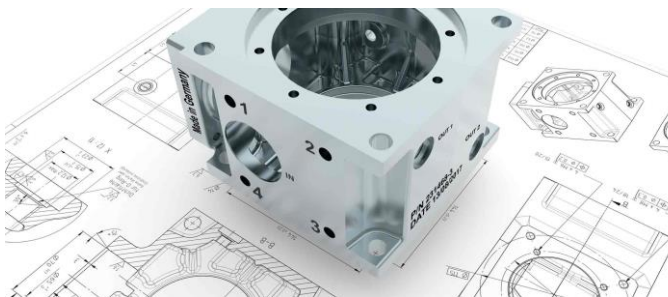


200LMO

20W FIBER LASER MARKER

CLASS 4

- ▷ PERMANENT DIRECT PRINTING
- ▷ MAXIMUM QUALITY OF FIBER LASER TECHNOLOGY
- ▷ PERFORMANCE (EXPECT 100,000 HRS MTBF)
- ▷ INDUSTRY REFERENCE SOFTWARE
- ▷ CLASS 4 LASER (to be integrated)
- ▷ AFFORDABLE
- ▷ 36 MONTHS WARRANTY
- ▷ NO MAINTENANCE OR CONSUMABLES
- ▷ BACKED UP BY EXPERIENCE AND GOOD SERVICE



Gone are the days of expensive and complex laser markings : the **200LMO** laser marker's innovative design is based on real life experiences of laser marking.

Today laser marking techniques are fast becoming the method of choice for marking components for a multitude of industries. Many are switching to fiber laser marking because of its capabilities and efficiencies, as well as its low costs.

With the **200LMO** : all you need is a 13A plug to get started and make it work !

A laser marker made for businesses like yours.

200 LMO – PRECISE, SOLID, EASY TO INEGRATE ... ULTRA RELIABLE

LASER

- ▷ 20W Fiber laser, Ytterbium Fiber laser, 1.064 micron wavelength, MTBF 100,000 Hrs, air cooled, 20KHz to 80KHz rep. rate
- ▷ Marking field :
110mm x 110mm
2 mm max depth of field
- ▷ Marking speed :
Up to 7,000 mm/s
- ▷ Air Cooled
- ▷ Red beam laser pointer

PROTECTION

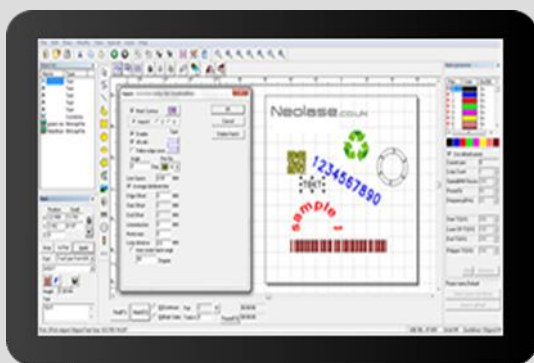
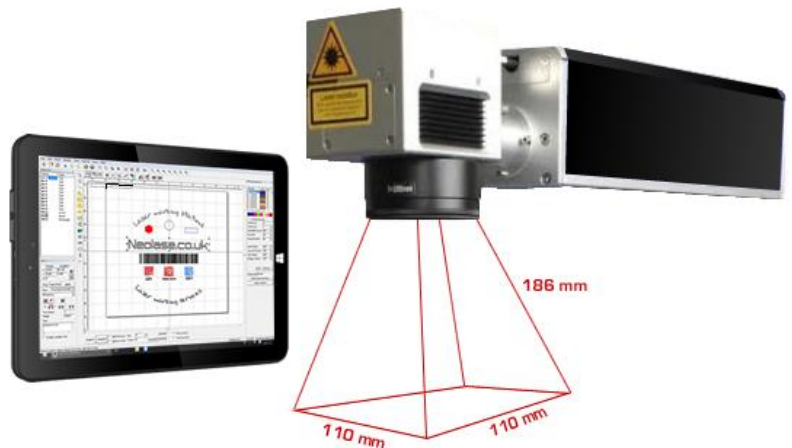
- ▷ CE and FCC approved

OPTIONS

- ▷ PC : Touch screen
(UK Windows®)
- ▷ Fume Extractor
- ▷ Different lenses (please consult us)

ENVIRONMENT

- ▷ Head weight : 15 Kg
approximately
- ▷ Integrated power supply
(100 – 240 VAC, 50 / 60 Hz)
- ▷ Power consumption : 150W
- ▷ Operating temperature 0 °C to 45 °C



SOFTWARE

The laser industry reference, Windows®, WYSIWYG

Shapes, graphics, logos, text (TTF, JSF, flat, angled, circular, contour), images (greyscale)

Barcodes, Datamatrix, QR, variable text, incrementation, matrix, dates, times

Powerful hatching functions

File compatibility : dxf, .bmp, .jpg, .gif, .tga, .png, .tif, .ai, .dst, .plt, .dwg, compatibleCAD®,®,®

Red pointer, marking time indicator

Full laser and writing parameters control, up to 256 different settings per file possible

