

# 20W FIBER

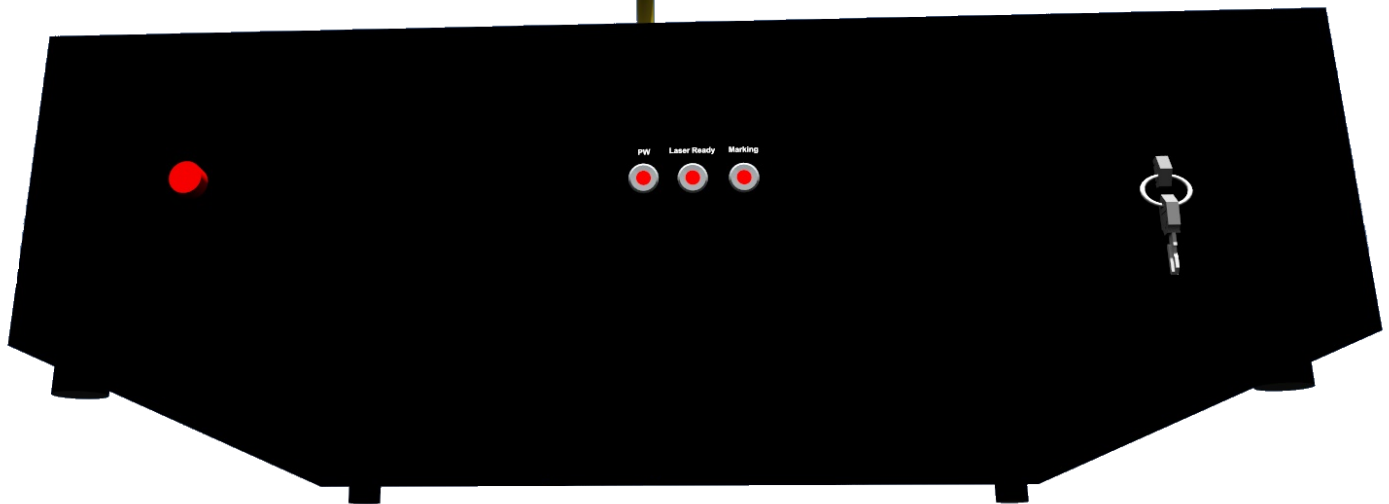
# BLACKBOX<sup>ECO</sup> OEM LASER

## CLASS 4

- ▷ PERMANENT DIRECT PRINTING
- ▷ MAXIMUM QUALITY OF FIBER LASER TECHNOLOGY
- ▷ PERFORMANCE (EXPECT 100,000 HRS MTBF)
- ▷ INDUSTRY REFERENCE SOFTWARE
- ▷ CLASS 4 LASER



- ▷ AFFORDABLE
- ▷ 24 MONTHS WARRANTY
- ▷ ALMOST NO MAINTENANCE OR CONSUMABLES
- ▷ BACKED UP BY EXPERIENCE AND GOOD SERVICE



Gone are the days of expensive and complex laser markings : the "Blackbox OEM" laser marker design is based on real life experiences of laser marking : we know what works and what doesn't, we know what it easy to integrate, what is not.

Today the laser marking technique is fast becoming the method of choice for marking components for a multitude of industries, which are switching to fiber laser marking.

The fiber laser marking capabilities and efficiencies, combined with its costs, makes it the new workhorse of many factories.

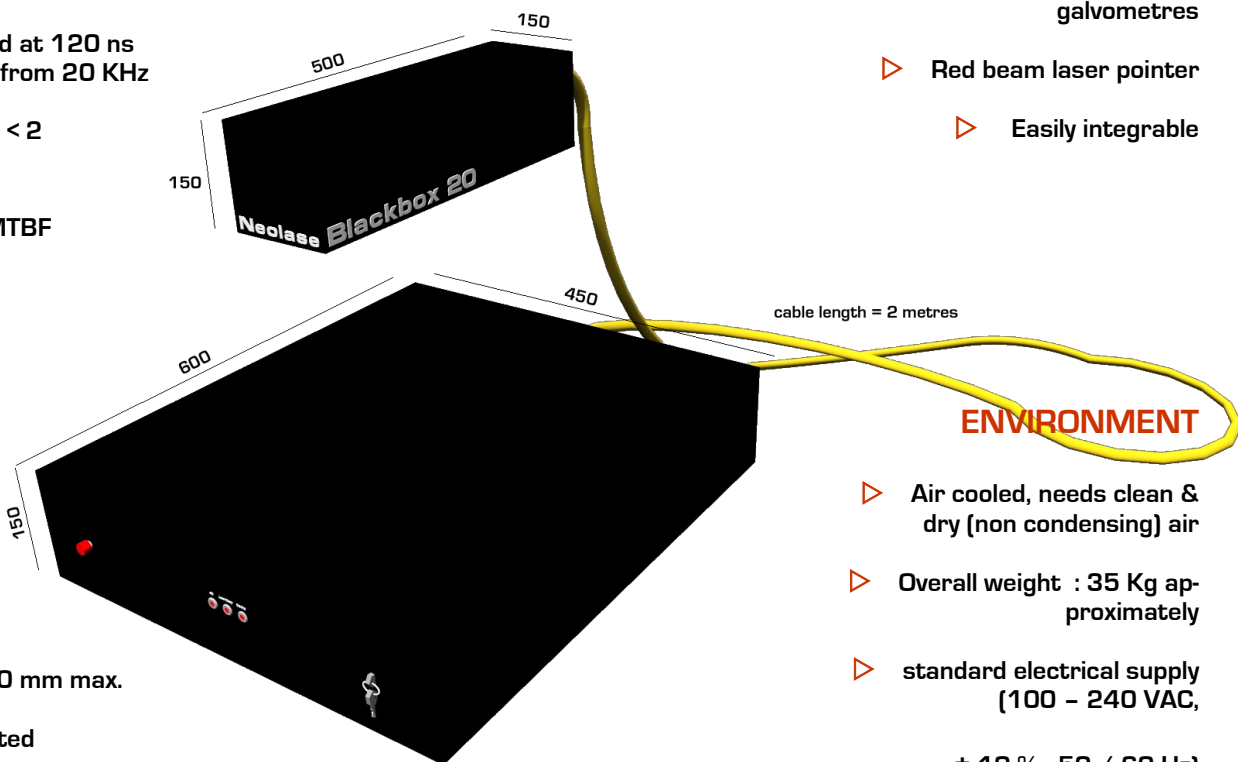
All you need is a 13A power supply to get started and make it work !

**Now is the time to fully democratise laser marking & engraving.**

# BLACKBOX<sup>ECO</sup> OEM FIBER

## LASER

- ▷ Ytterbium Fiber laser, 1 micron wavelength
- ▷ 20 Watts  
Pulse width : fixed at 120 ns  
Repetition rate : from 20 KHz to 60 KHz  
Beam Quality  $M^2 < 2$
- ▷ Reliability :  
100,000 Hrs MTBF



## CONSTRUCTION

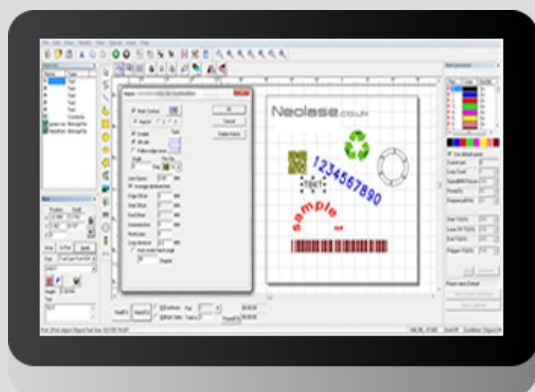
- ▷ Class 4 laser
- ▷ Scanning : High precision galvometres
- ▷ Red beam laser pointer
- ▷ Easily integrable

## OPTIONS

- ▷ Rotary Axis : Ø 80 mm max.
- ▷ Camera : Integrated
- ▷ Lens : 110 x 110 mm marking area
- ▷ PC : Desktop UK Windows® 7
- ▷ Fume Extractor

## ENVIRONMENT

- ▷ Air cooled, needs clean & dry (non condensing) air
- ▷ Overall weight : 35 Kg approximately
- ▷ standard electrical supply (100 - 240 VAC, ± 10 % , 50 / 60 Hz)
- ▷ Power consumption : 600W
- ▷ Operating temperature : 15 °C to 30 °C



## SOFTWARE

The laser industry reference, Windows®, WYSIWYG

Shapes, graphics, logos, text (TTF, JSF, flat, angled, circular, contour), images (greyscale)

Barcodes, Datamatrix, QR, variable text, incrementation, matrix, dates, times

Powerful hatching functions

File compatibility : dxf, .bmp, .jpg, .gif, .tga, .png, .tif, .ai, .dst, .plt, .dwg, compatible Auto CAD®, CorelDraw®, Photoshop®

Red pointer, marking time indicator

Full laser and writing parameters control, up to 256 different settings per file possible

