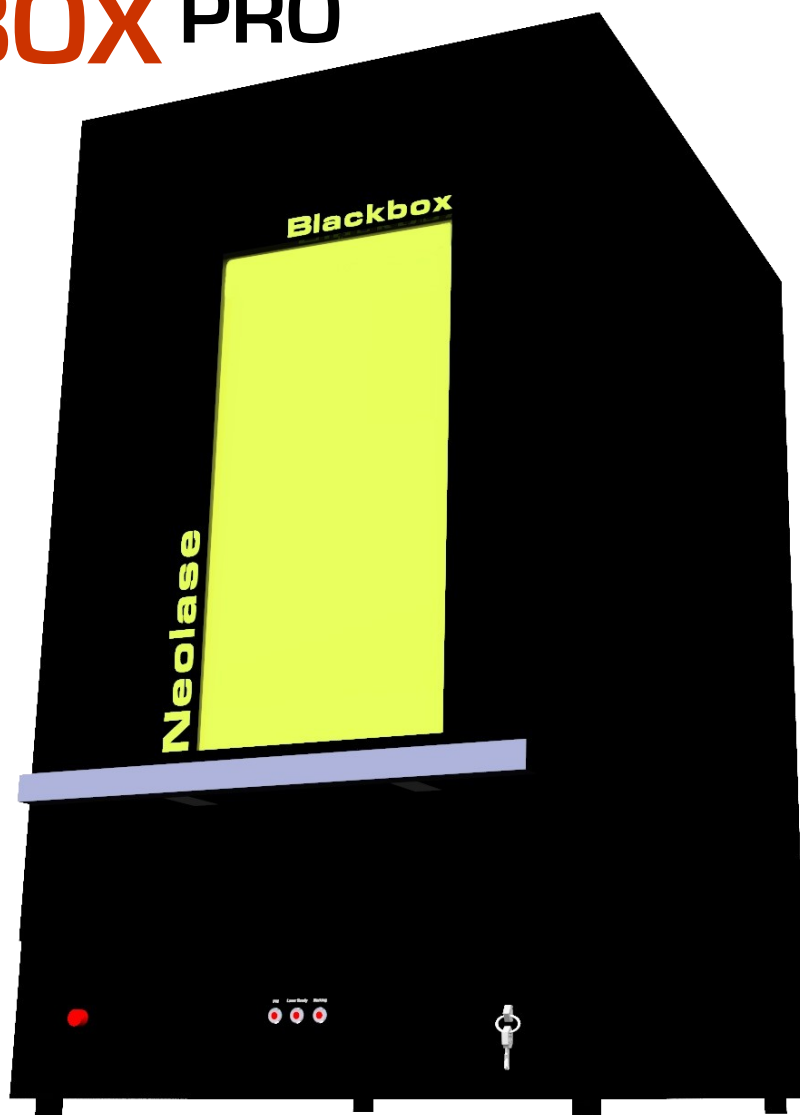


# 20W FIBER LASER MARKING STATION

## the **BLACKBOX** PRO

### CLASS 1

- ▷ PERMANENT DIRECT PRINTING
- ▷ MAXIMUM QUALITY OF FIBER LASER TECHNOLOGY
- ▷ PERFORMANCE (EXPECT 100,000 HRS MTBF)
- ▷ INDUSTRY REFERENCE SOFTWARE
- ▷ CLASS 1 LASER STATION
- ▷ AFFORDABLE
- ▷ 24 MONTHS WARRANTY
- ▷ ALMOST NO MAINTENANCE OR CONSUMABLES
- ▷ BACKED UP BY EXPERIENCE AND GOOD SERVICE



Gone are the days of expensive and complex laser markings : the "Blackbox" laser marking station's innovative design is based on real life experiences of laser marking : we know what works and what doesn't.

Today the laser marking technique is fast becoming the method of choice for marking components for a multitude of industries, which are switching to fiber laser marking.

The fiber laser marking capabilities and efficiencies, combined with its costs, makes it the new workhorse of many factories.

All you need is a 13A plug to get started and make it work !

**Now is the time to fully democratise laser marking & engraving.**

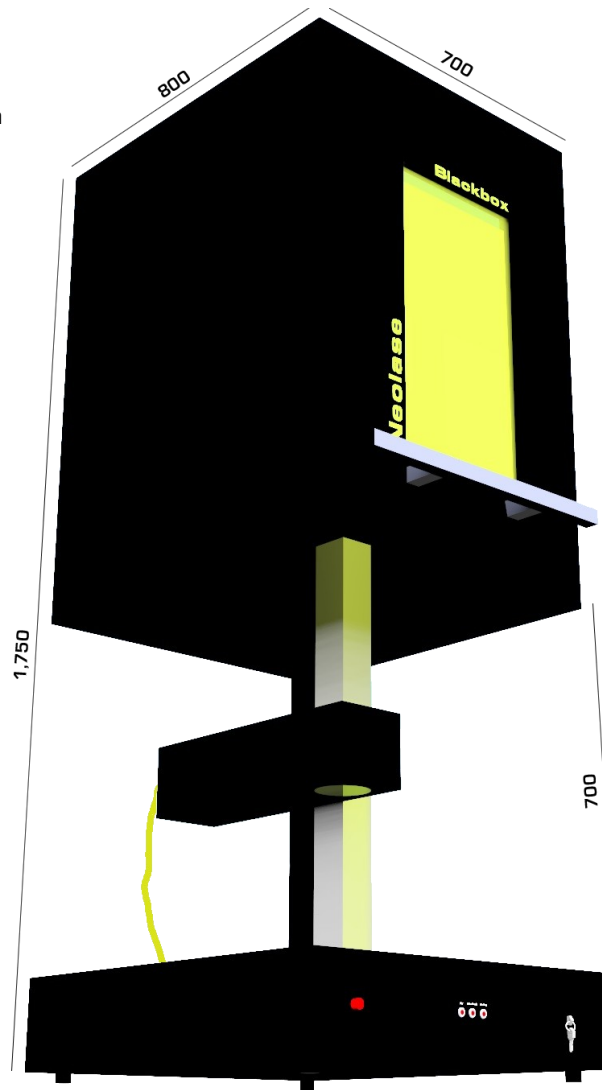
# BLACKBOX PRO

## LASER

- ▷ Ytterbium Fiber laser, 1 micron wavelength
- ▷ 20 Watts  
Pulse width : from 4 to 350 ns  
Repetition rate : from 10 KHz to 1Mhz  
Beam Quality  $M^2 < 2$
- ▷ Reliability :  
100,000 Hrs MTBF

## OPTIONS

- ▷ Rotary Axis : Ø 80 mm max.
- ▷ Vertical Axis : Electrical, 800 mm max.
- ▷ Camera : Integrated
- ▷ Lens : Small or large spot size
- ▷ PC : Touch screen (UK Windows®)
- ▷ Fume Extractor
- ▷ Industrial bench

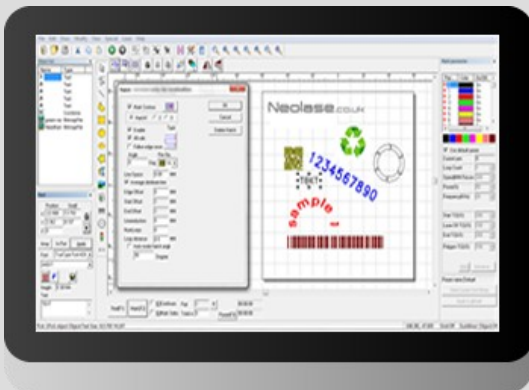


## MARKING STATION

- ▷ Scanning : High precision galvanometers
- ▷ Red beam laser pointer
- ▷ Vertical axis : manual
- ▷ Door : manual

## ENVIRONMENT

- ▷ Air cooled, needs clean & dry (non condensing) air
- ▷ Overall weight : 60 Kg approximately
- ▷ Maximum part weight : 15 Kg approximately
- ▷ standard electrical supply (100 - 240 VAC, ± 10 %, 50 / 60 Hz)
- ▷ Power consumption : 600W
- ▷ Operating temperature :  
15 °C to 30 °C



## SOFTWARE

The laser industry reference, Windows®, WYSIWYG

Shapes, graphics, logos, text (TTF, JSF, flat, angled, circular, contour), images (greyscale)

Barcodes, Datamatrix, QR, variable text, incrementation, matrix, dates, times

Powerful hatching functions

File compatibility : dxf, .bmp, .jpg, .gif, .tga, .png, .tif, .ai, .dst, .plt, .dwg, compatible Auto CAD®, CorelDraw®, Photoshop®

Red pointer, marking time indicator

Full laser and writing parameters control, up to 256 different settings per file possible

