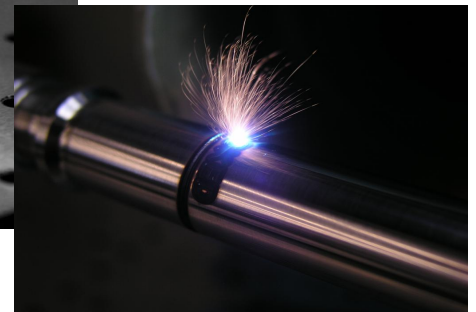
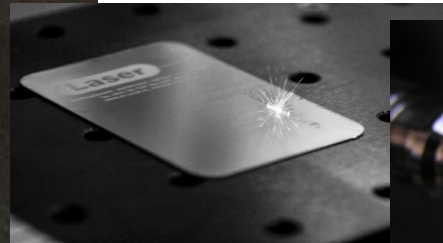


- PERMANENT DIRECT PRINTING
- MAXIMUM QUALITY OF FIBER LASE TECHNOLOGY
- PERFORMANCE (EXPECT 100,000 HRS MTBF)
- INDUSTRY REFERENCE SOFTWARE
- CLASS 1 LASER STATION
- AFFORDABLE
- 24 MONTHS WARRANTY
- NO MAINTENANCE OR CONSUMABLES
- BACKED UP BY EXPERIENCE AND GOOD SERVICE



LASER

- 20W Fiber laser, Ytterbium Fiber laser, 1.064 micron wavelength, MTBF 100,000 Hrs, air cooled, 20KHz to 80KHz rep. rate
- Marking field : 110 x 110 mm [4.3" x 4.3"] (optional bigger lens)
- Marking speed : Up to 5,000 mm/s
- Air Cooled

CERTIFICATION

- Class 1 Enclosure (according to DIN EN 60825-1)
- CE and FCC approved

MARKING STATION

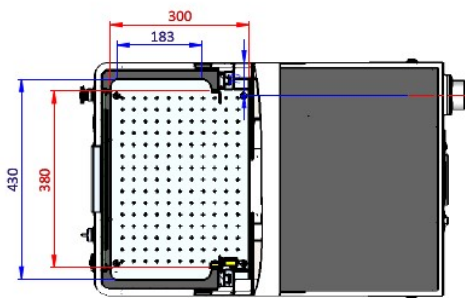
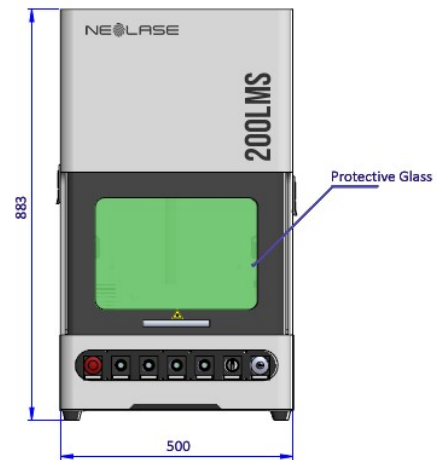
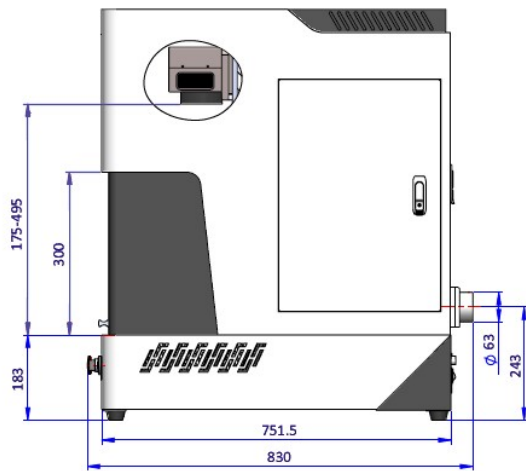
- Real usable maximum part size : 360 x 240 x 110 mm
- Manual, vertical U – Shaped door
- Base plate ready for fixture
- Red beam laser pointer
- Electrical Vertical axis
- USB 2.0Port

ENVIRONMENT

- Overall weight : 65 Kg
- Integrated power supply
- (100 – 240 VAC, 50 / 60 Hz)
- Power consumption : 150W
- Operating temperature 0 °C to 45 °C

OPTIONS

- PC (UK Windows®)
- Fume Extractor
- Rotary axis



SOFTWARE

- THE LASER INDUSTRY REFERENCE, WINDOWS®, WYSIWYG
- SHAPES, GRAPHICS, LOGOS, TEXT (TTF, JSF, FLAT, ANGLED, CIRCULAR, CONTOUR), IMAGES (GREYSCALE)
- BARCODES, DATAMATRIX, QR, VARIABLE TEXT, INCREMENTATION, MATRIX, DATES, TIMES
- POWERFUL HATCHING FUNCTIONS
- FILE COMPATIBILITY : DXF, .BMP, .JPG, .GIF, .TGA, .PNG, .TIF, .AI, .DST, .PLT, .DWG, COMPATIBLECAD®
- RED POINTER, MARKING TIME INDICATOR
- FULL LASER AND WRITING PARAMETERS CONTROL, UP TO 256 DIFFERENT SETTINGS PER FILE POSSIBLE

